

Summer Sand



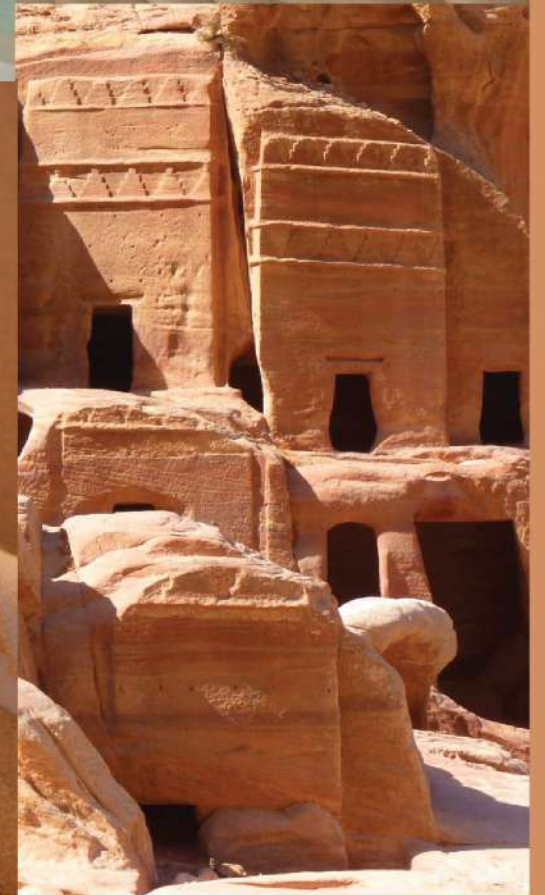
A *Rosetta*® Venture



Dimensions & Durability

Construction	Tufted, Luxury Textured Loop Pile
Face Fibre	Monofiber Nylon
Color Method	Inkfinity Ink-Infused Digital Crafting
Soil Release	AR Guard Advanced Stain & Soil Protection
Pile Weight	580 g/m2
Gauge	1/12th
Rows	47.2 / 10 cm
Tuft Density	207,874 /m
Finished Pile Height	5.3 mm
Backing	2.5mm of Sustainably Engineered Treadsoft with 90% Recycled Polyurethane
Total Thickness	10 mm
Tile Size	50cm x 50cm 25cm x 25cm 1m x 1m
Total Weight	4500 g/m2
Nominal Total Weight	3600 g/m2

Inspired by windswept dunes and sunbaked deserts, the Summer Sand collection brings the timeless beauty of sand and earth into your space. With soft, grainy textures and warm, muted tones, this collection evokes the natural elegance and tranquility of arid landscapes.



Warm Grey



WG01
White Sand



WG02
Wind Chime



WG03
Chateau Grey



WG04
Moon Rock



WG05
Driftwood



WG06
Eiffel Tower



WG07
Licorice

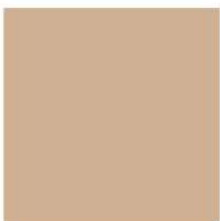
Natural



N01
White Asparagus



N02
Bleached Sand



N03
Warm Sand



N04
Tanin



N05
Toasted Coconut



N06
Partridge



N07
Rain Drum



N08
Black Coffee

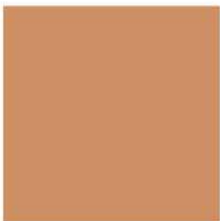
Sand



S01
Biscotti



S02
Sand



S03
Pastry Shell

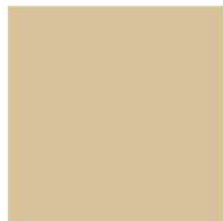


S04
Meerkat



S05
Glazed Ginger

Woods



W01
Soybean



W02
Honey Mustard



W03
Cumin



W04
Plantation



W05
Military Olive

Design Dune

Summer Sand





Lay-out Placed



Tile 1



WG01 - White Sand



N04 - Tannin



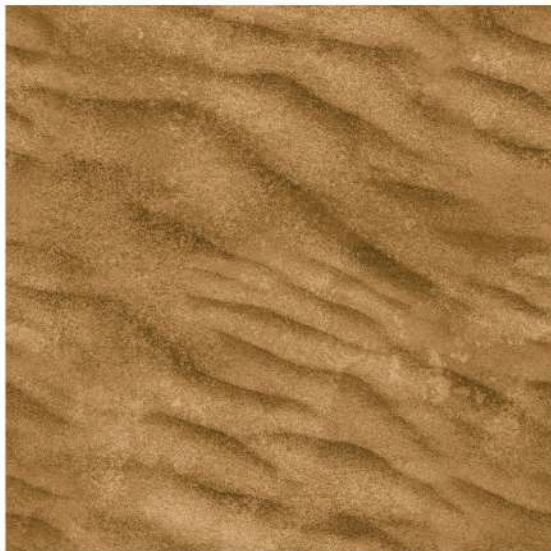
S01 - Biscotti



S04 - Meerkat



W01 - Soybean



W03 - Cumin



N03 - Warm Sand

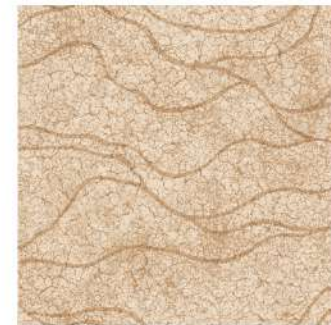




Lay-out Straight



Tile 1



Tile 2



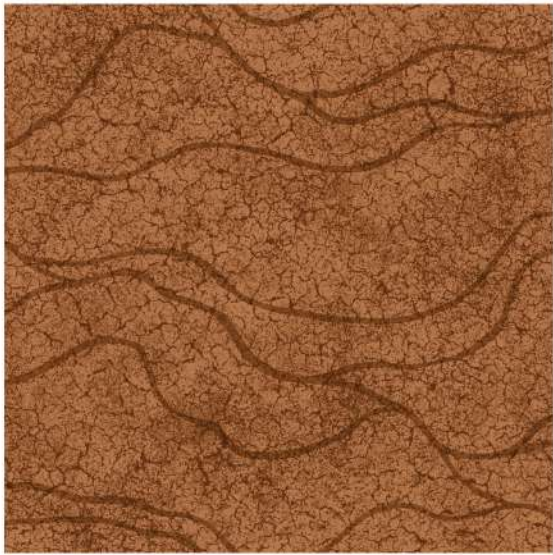
WG01 - White Sand



N05 - Toasted Coconut



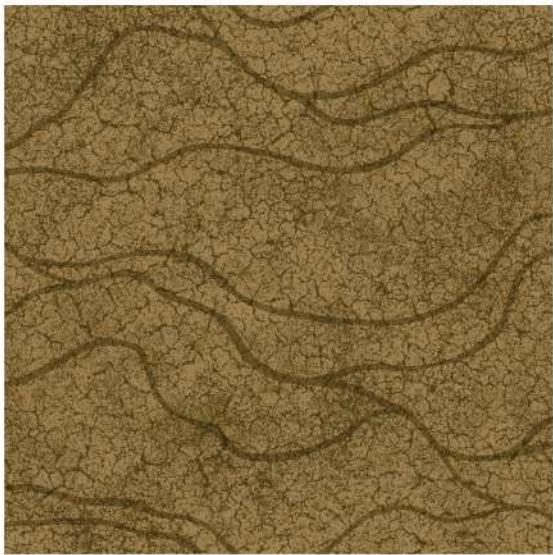
S01 - Biscotti



S05 - Glazed Ginger



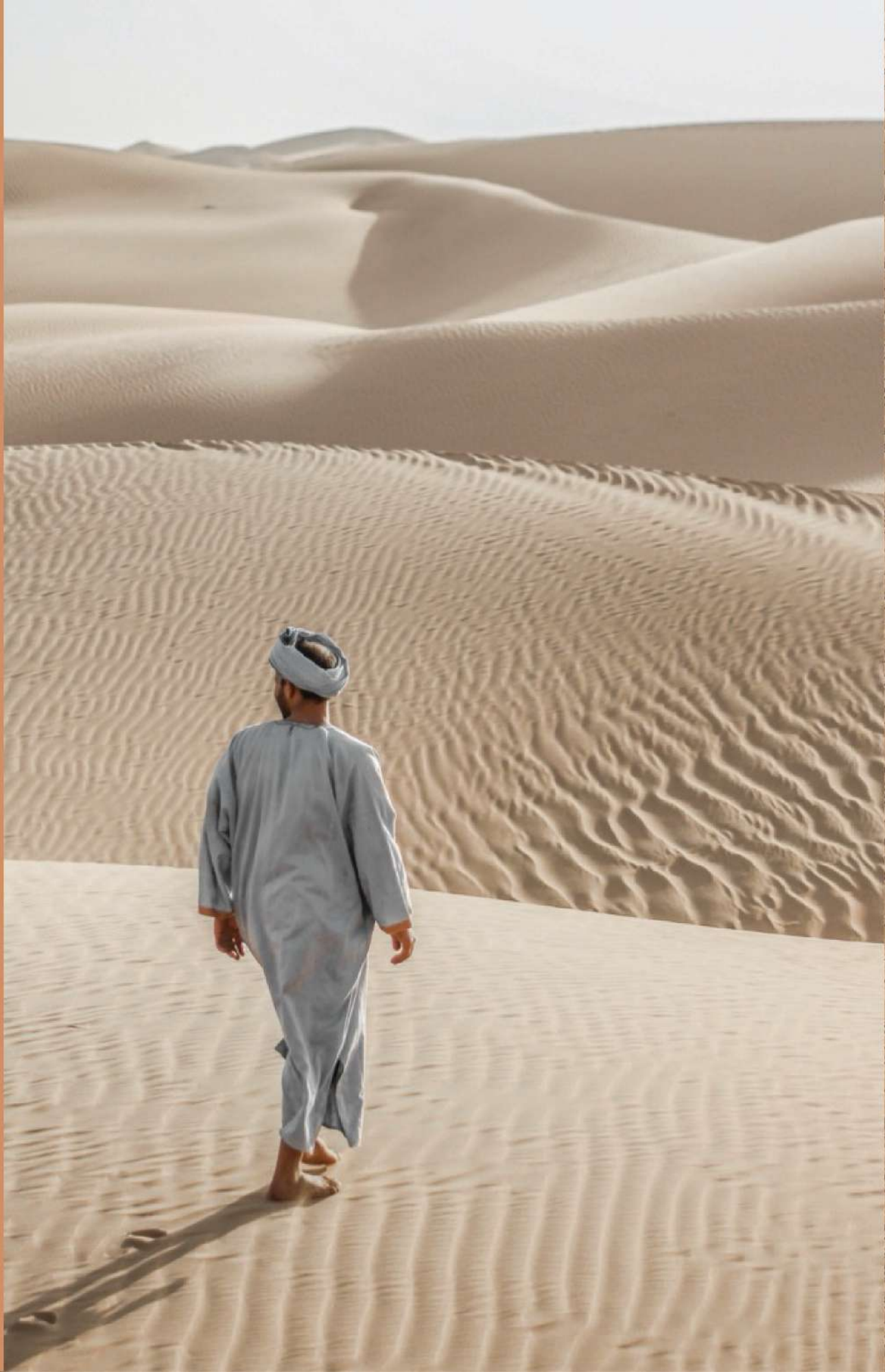
W01 - Soybean



W04 - Plantation



N01 - White Asparagus





Lay-out Straight



Tile 1



WG04 - Moon Rock



N04 - Tannin



N02 - Bleached Sand



S04 - Meerkat



W01 - Soybean



W04 - Plantation

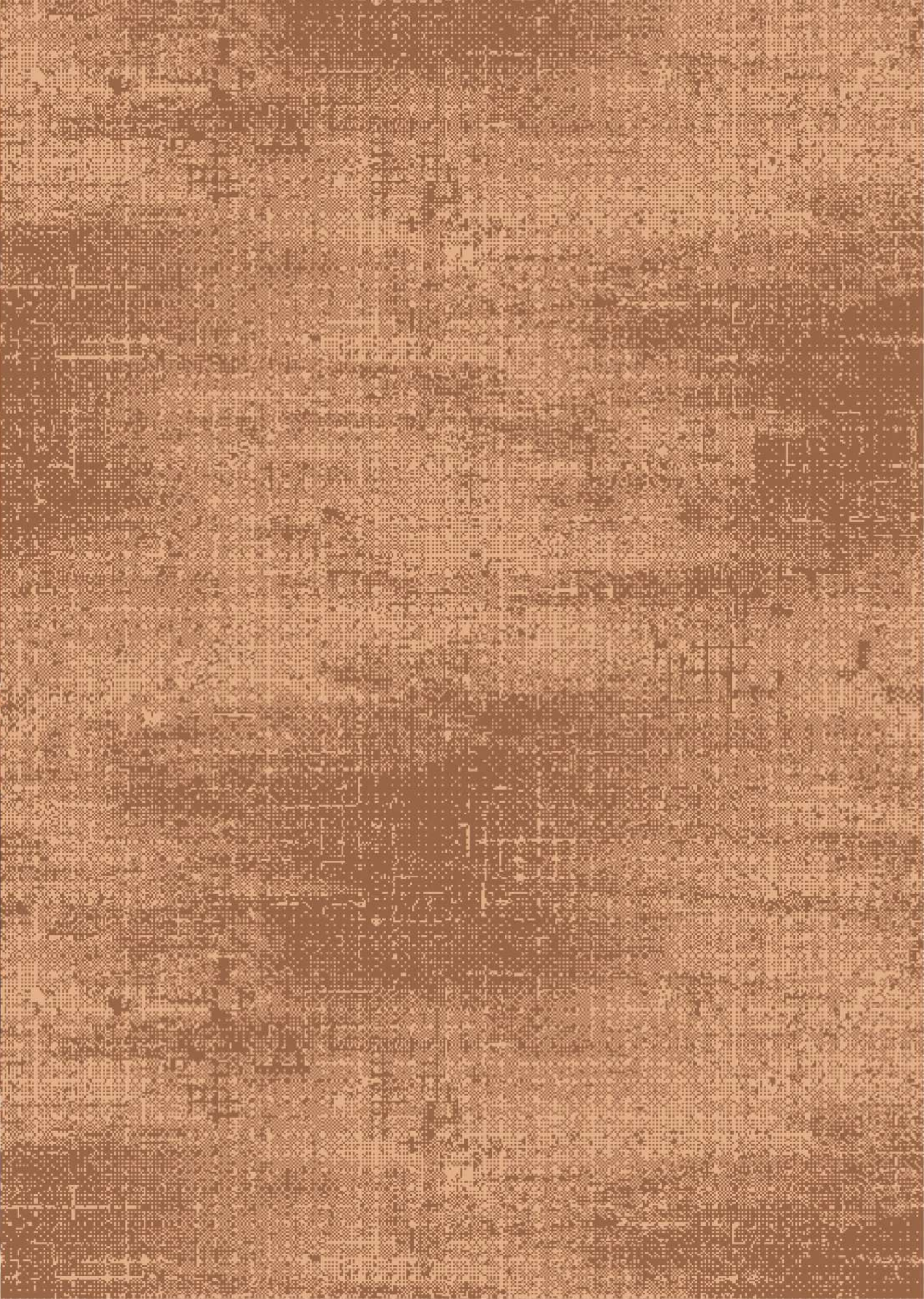


WG02 - Wind Chime

Design Rustic



Summer Sand





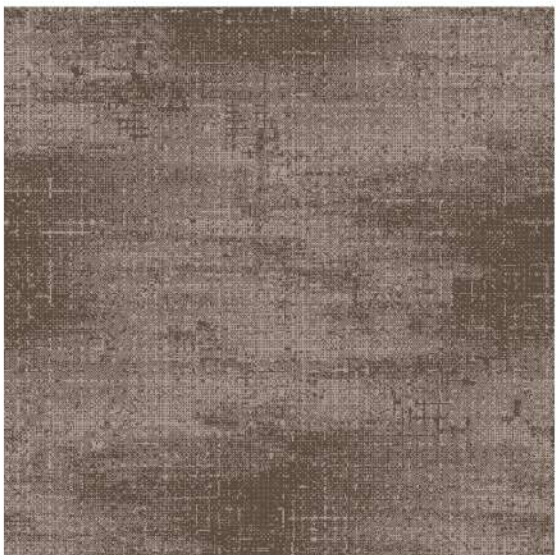
Lay-out Straight



Tile 1



WG01 - White Sand



WG04 - Moon Rock



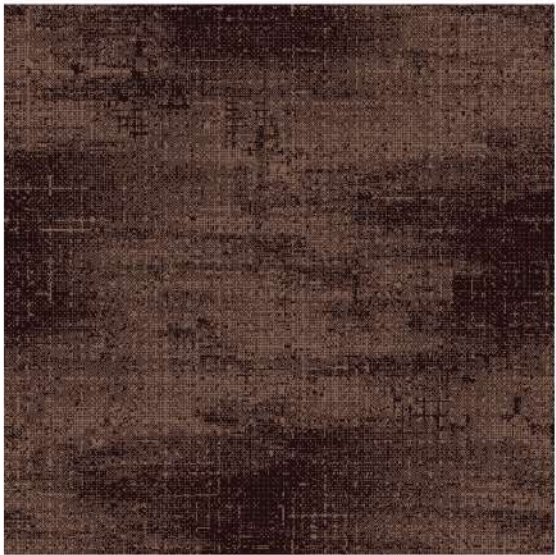
N01 - White Asparagus



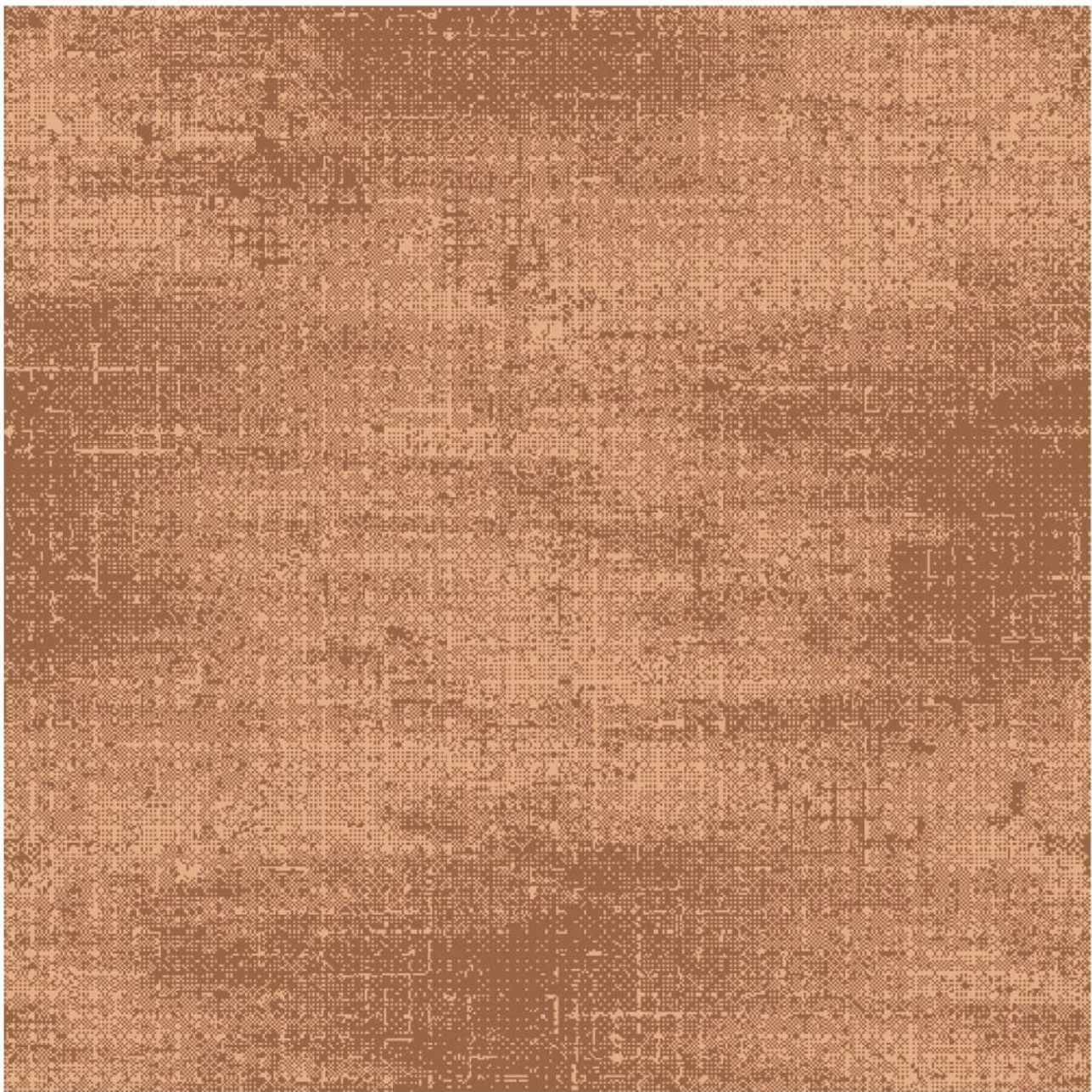
N04 - Rustic



S04 - Meerkat



N07 - Rain Drum



S02 - Sand





Lay-out Random



Tile 1



WG02 - Wind Chime



WG04 - Moon Rock



W01-Soybean



N07 - Raindrum



S05 - Glazed Ginger



W04 - Plantation



N03-Warm Sand

Why Inkfiniti Carpet Tiles?



Our Path to Sustainability

**Eco-Conscious German Inks**

**Advanced Stain Protection**
with maximum Resistance

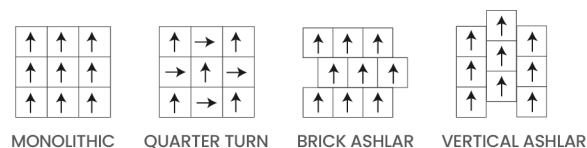
**10 Years Warranty**

**UV Protected**

**Fire Retardant**

**Wear Resistant**

- Multiple Colorways to offer infinite possibilities
- Meticulously Hand-Placed for 100% Precision & Care
- Customize your design
- High-durability yarns used for high performance
- Soft, eco-friendly flooring with recycled backing.



Treadsoft Recycled Backing



Resilience



Superior Durability



Environmental Consciousness



Acoustics



AR Guard Advanced
Stain & Soil Protection

Tufted, Luxury
Textured Loop Pile

Sustainably Engineered Treadsoft
with 90% Recycled Polyurethane

